



**BERWYN FIRE COMPANY**  
**BERWYN, PA**  
*S.O. 145449 / Q113006*  
**PUMPER**  
**TYPHOON CHASSIS**

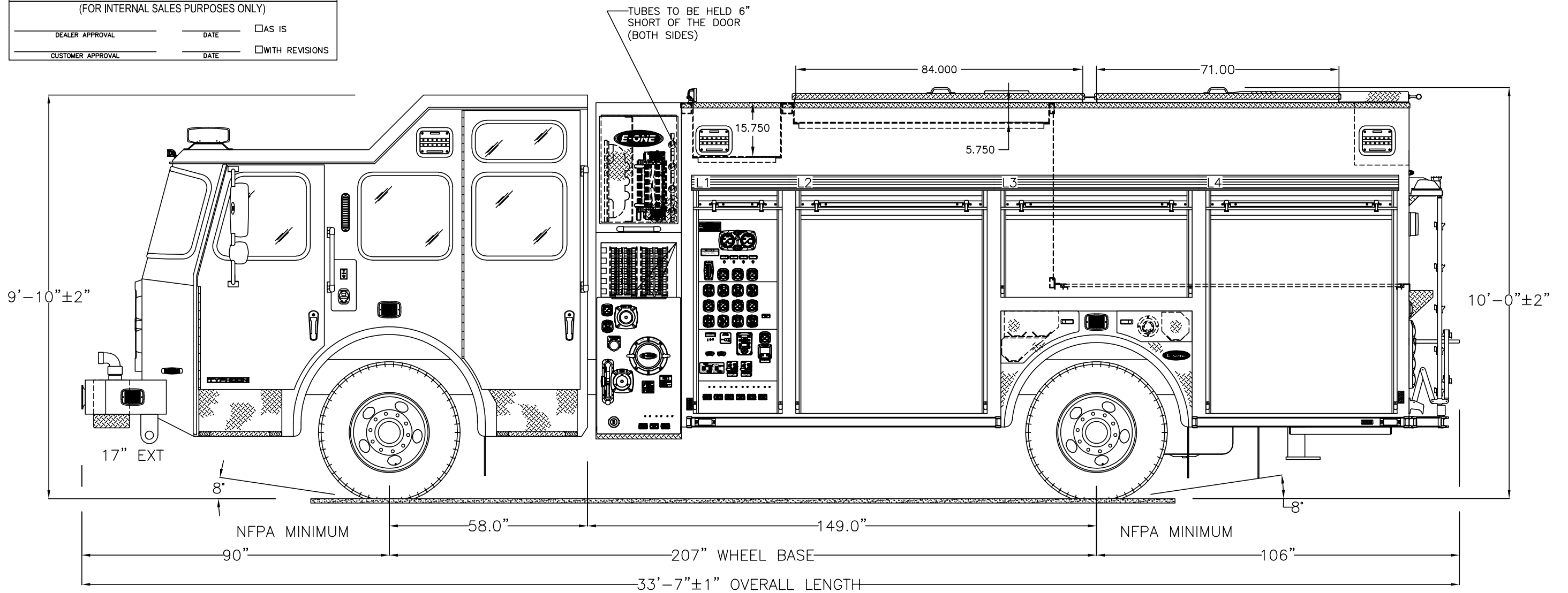
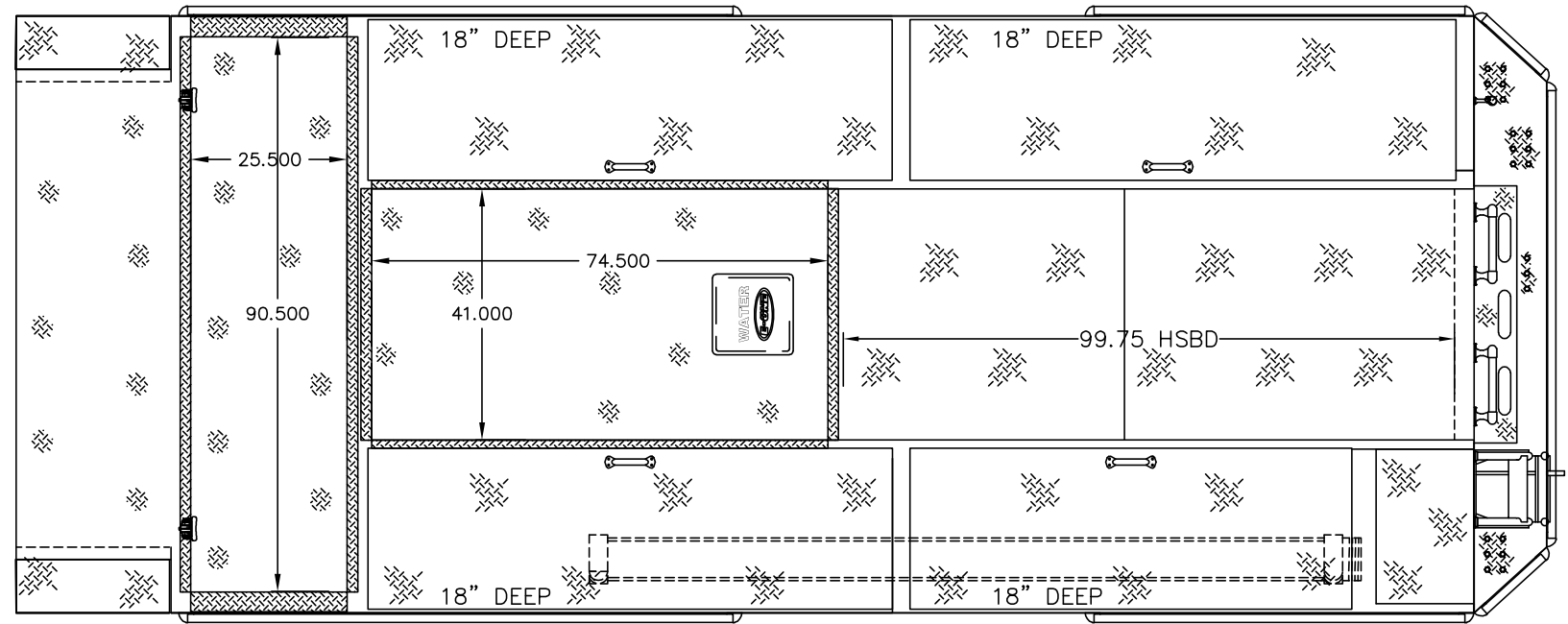
1500 GPM HALE QMAX-XS PUMP 780 GALLON WATER TANK	<b>HOSE LOAD:</b>
	300' OF 1.75" DJ
	250' OF 2.50" DJ
	1000' OF 5.00" LDH

COMPT.	OPENING	INTERIOR DIMENSION				
L1	24W 59H	PUMP PANEL				
L2/L4	54W 59H	56W	3H	12D	UPPER	
		56W	56H	26D	LOWER	
L3	54W 25H	56W	3H	12D	UPPER	
		56W	24H	26D	LOWER	
R1	24W 59H	26W	3H	12D	UPPER	
		26W	56H	26D	LOWER	
R2/R4	54W 59H	56W	3H	12D	UPPER	
		56W	56H	26D	LOWER	
R3	54W 25H	56W	3H	12D	UPPER	
		56W	22H	26D	LOWER	
B1	36W 21H	38W	30H	27D		

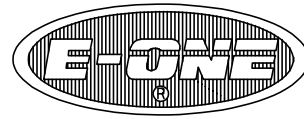
THIS DRAWING IS FOR REFERENCE PURPOSES. ALL DIMENSIONS ARE SUBJECT TO MINOR VARIATIONS DUE TO MANUFACTURING PROCESSES.

(FOR INTERNAL SALES PURPOSES ONLY)

DEALER APPROVAL \_\_\_\_\_ DATE \_\_\_\_\_  AS IS  
 CUSTOMER APPROVAL \_\_\_\_\_ DATE \_\_\_\_\_  WITH REVISIONS



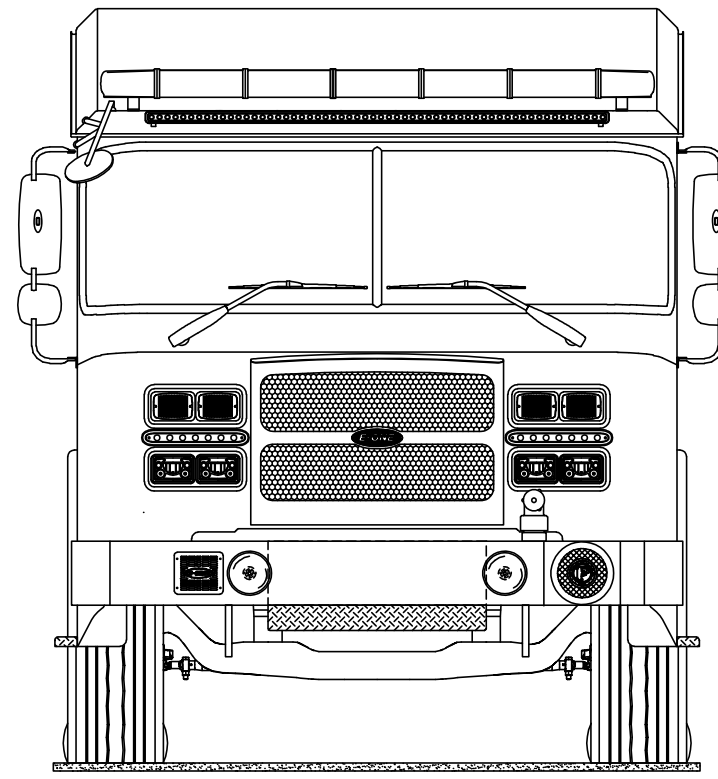
NGRFFN	A.6	ORDER RELEASE	2022-AUG-04	NGRFFN
DRAWN BY	REV	DESCRIPTION	DATE	APPROVED
		APPROVAL REVISIONS		SHEET 1 OF 2



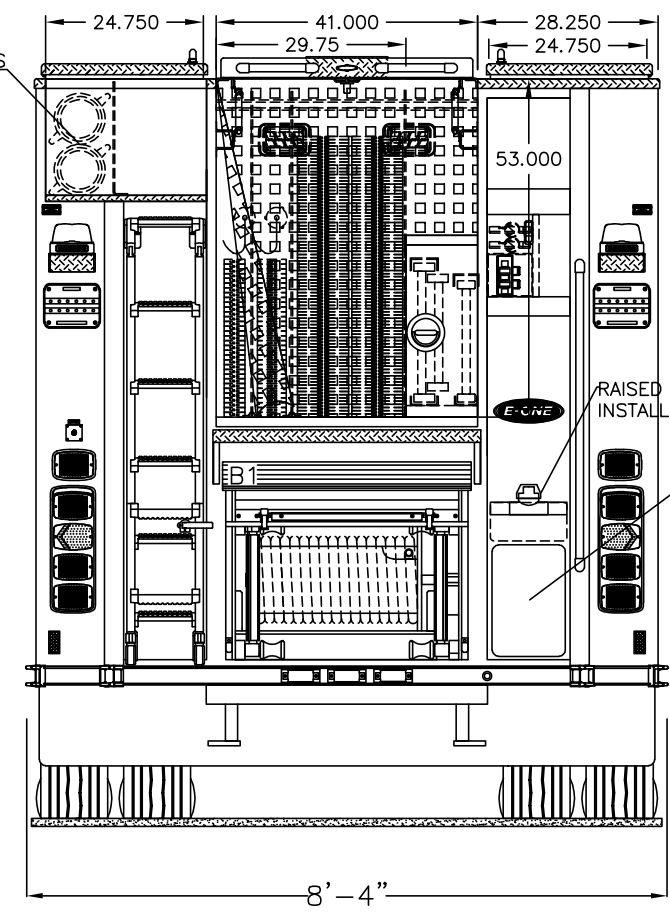
**BERWYN FIRE COMPANY**  
**BERWYN, PA**  
*S.O. 145449 / Q113006*  
**PUMPER**  
**TYPHOON CHASSIS**

THIS DRAWING IS FOR REFERENCE PURPOSES. ALL DIMENSIONS ARE SUBJECT TO MINOR VARIATIONS DUE TO MANUFACTURING PROCESSES.  
 (FOR INTERNAL SALES PURPOSES ONLY)

DEALER APPROVAL \_\_\_\_\_ DATE \_\_\_\_\_  AS IS  
 CUSTOMER APPROVAL \_\_\_\_\_ DATE \_\_\_\_\_  WITH REVISIONS



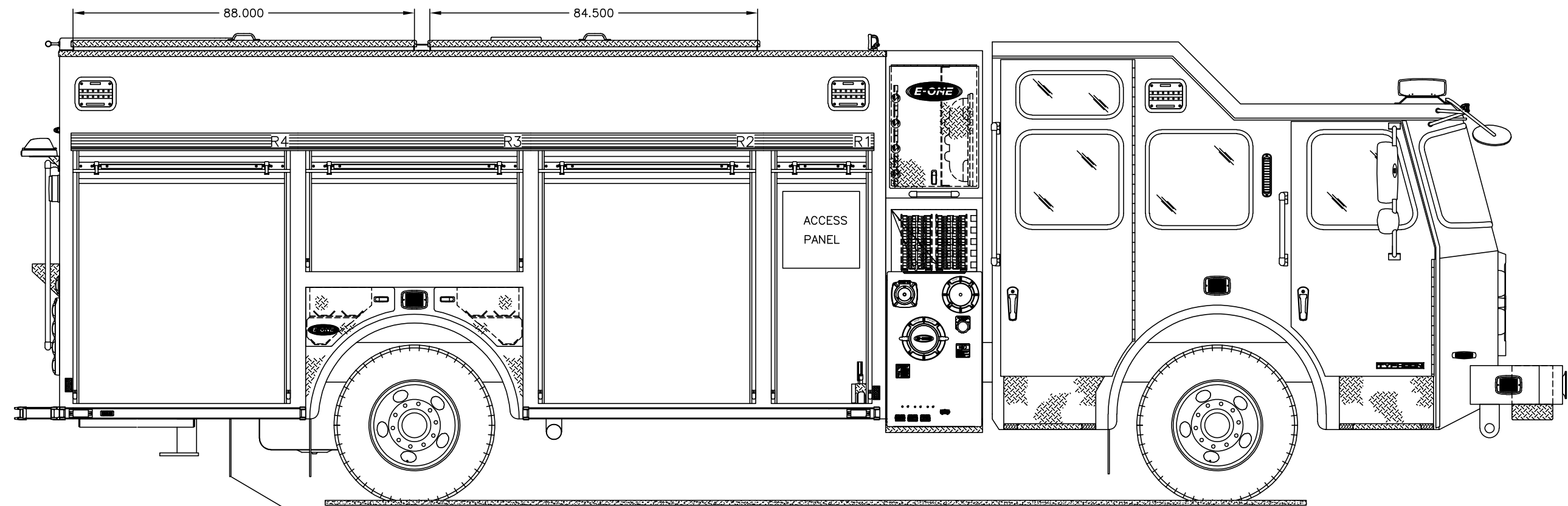
NO REAR ACCESS DOOR FOR HARD SUCTIONS



RAISED DUE TO DEALER/CUSTOMER INSTALLED EQUIPMENT

BRUSHED STAINLESS OVERLAY

HOSEBED HEIGHT:  
 (FOR REFERENCE ONLY)  
 TO TAILBOARD: 39"  
 TO GROUND: 63±2"



FULL WIDTH MUD FLAP TO BE BETWEEN TOW EYES AND FUEL TANK

NGRFFN	A.6	ORDER RELEASE	2022-AUG-04	NGRFFN
DRAWN BY	REV	DESCRIPTION	DATE	APPROVED
		APPROVAL REVISIONS		SHEET 2 OF 2