

# WOOLWICH FIRE COMPANY SWEDESBORO, NJ

SO# 137736 / Q46113

TTSA 3030 SM CUSTOM TANKER  
CII X MEDIUM CAB 6X4 CHASSIS

| COMPT. |         | OPENING |     | INTERIOR DIMENSION |       |  |  |
|--------|---------|---------|-----|--------------------|-------|--|--|
| L1/R1  | 60W 72H | 60W     | 34H | 12D                | UPPER |  |  |
| L2/L3  | 51W 34H | 51W     | 34H | 12D                | LOWER |  |  |
| R2/R3  | 51W 12H | 51W     | 12H | 12D                |       |  |  |
| L4     | 54W 72H | 54W     | 34H | 26D                | UPPER |  |  |
|        |         | 54W     | 34H | 26D                | LOWER |  |  |
| R4     | 54W 50H | 54W     | 12H | 12D                | UPPER |  |  |
|        |         | 54W     | 34H | 26D                | LOWER |  |  |

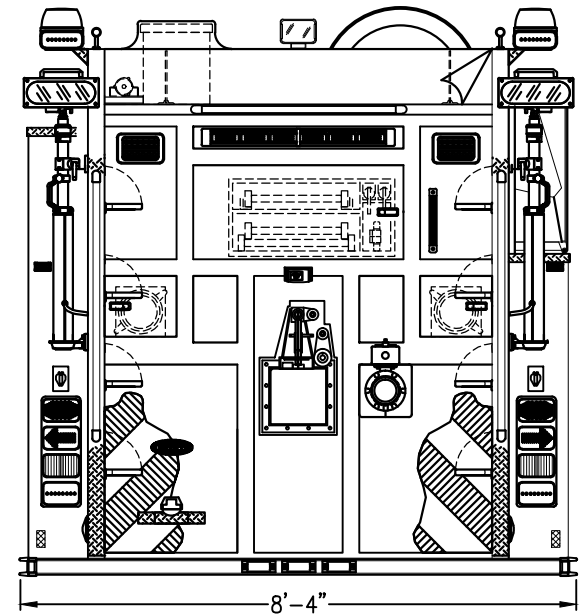
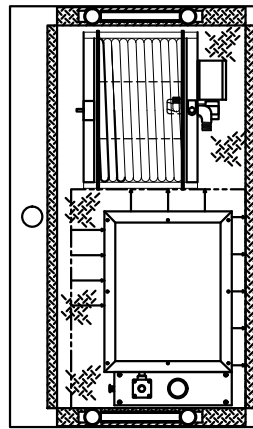
| HOSE LOAD: |                    |
|------------|--------------------|
|            | 300' OF 3.00" DJ   |
|            | 1200' OF 5.00" LDH |
|            | 300' OF 1.75" DJ   |

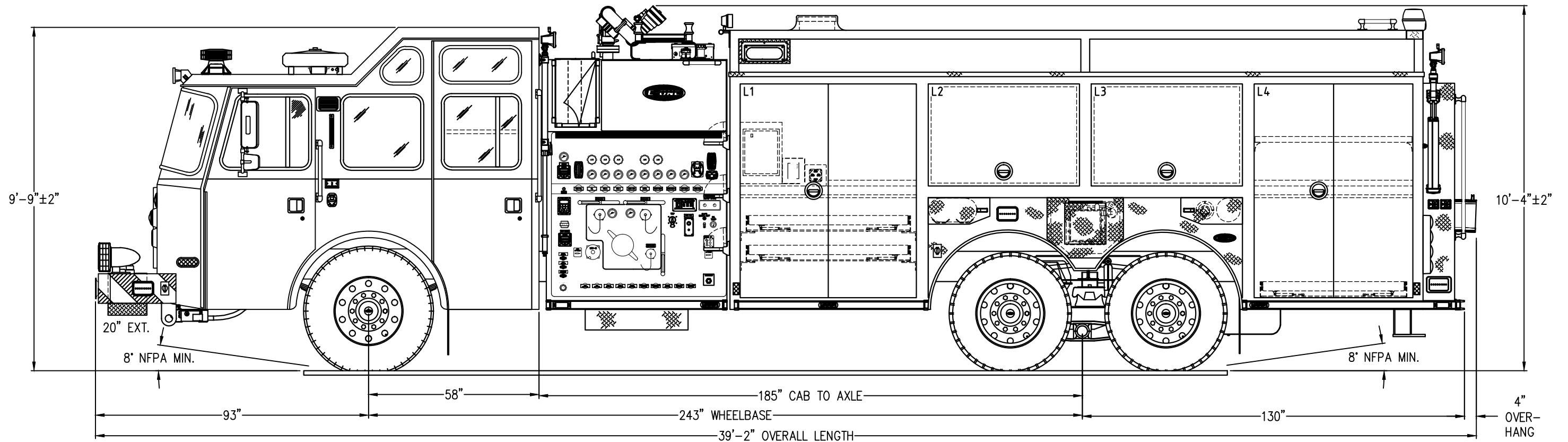
THIS DRAWING IS FOR REFERENCE PURPOSES. ALL DIMENSIONS ARE SUBJECT TO MINOR VARIATIONS DUE TO MANUFACTURING PROCESSES.

**APPROVED FOR PRODUCTION**

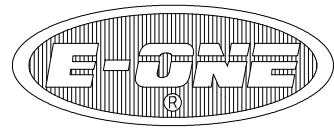
DESIGNER: \_\_\_\_\_ DATE: 10/02/2012



**HOSEBED HEIGHT:**  
(FOR REFERENCE ONLY)  
TO TAILBOARD: 82"  
TO GROUND: 106"



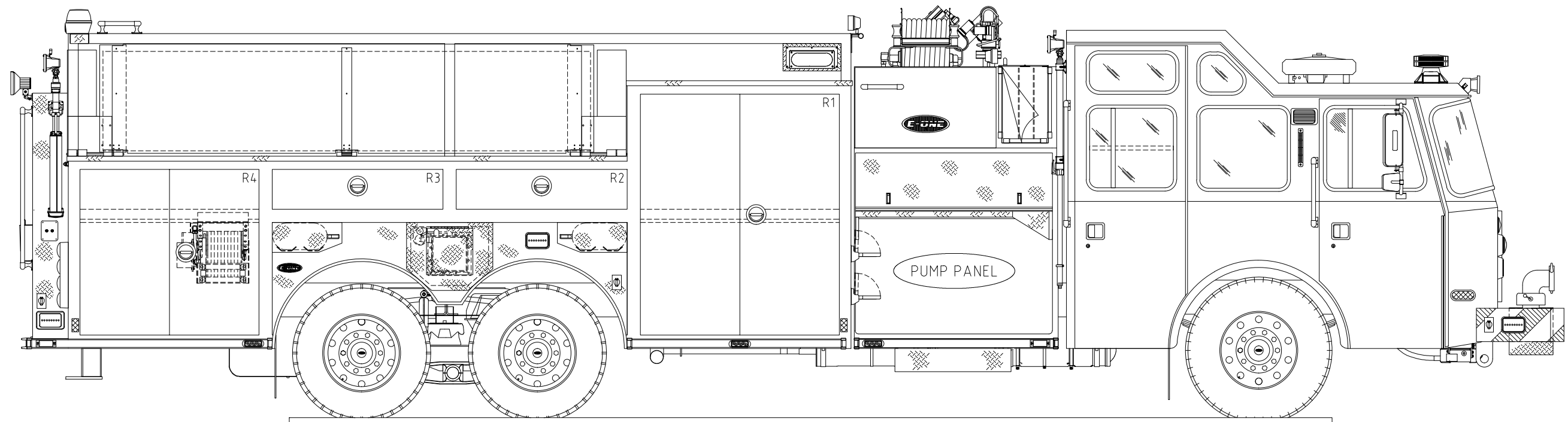
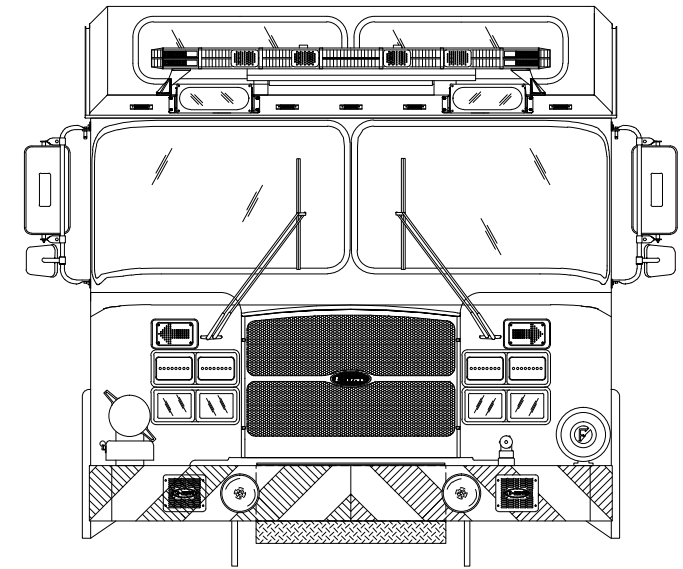
| DATE        | BY | DESCRIPTION             | DATE        | BY | DESCRIPTION |
|-------------|----|-------------------------|-------------|----|-------------|
| 2012-OCT-02 | DB | ORDER SUBMITTAL RELEASE | 2012-OCT-17 | WH | APPROVED    |
|             |    | PROPOSAL REVISIONS      |             |    |             |



**WOOLWICH FIRE COMPANY**  
**SWEDESBORO, NJ**  
*ROUTE 46113*  
**TTSA 3030 SM CUSTOM TANKER**  
**CYCLONE II X MEDIUM CAB 6X4 CHASSIS**

THIS DRAWING IS FOR REFERENCE PURPOSES. ALL DIMENSIONS ARE SUBJECT TO MINOR VARIATIONS DUE TO MANUFACTURING PROCESSES.

This print is the property of E-ONE, Inc. and is loaned to you subject to return on demand, unless otherwise agreed to in writing by E-ONE, Inc. Its contents are confidential and must not be copied or submitted to third parties for use or examination.



|                    |     |                 |            |          |
|--------------------|-----|-----------------|------------|----------|
| DWG                | C   | RF              | 2011-02-27 | JD       |
| RS                 | B   | RF              | 2011-08-15 | RS       |
| DWG                | A   | INITIAL RELEASE | 2011-08-13 | JD       |
| DRAWN BY           | REV | DESCRIPTION     | DATE       | APPROVED |
| PROPOSAL REVISIONS |     |                 |            |          |