

GLOUCESTER CITY FIRE DEPARTMENT

GLOUCESTER, NJ

SO.143694 / QUOTE 98933
 CUSTOM 42 PUMPER
 E-ONE TYPHOON 4X2 CHASSIS

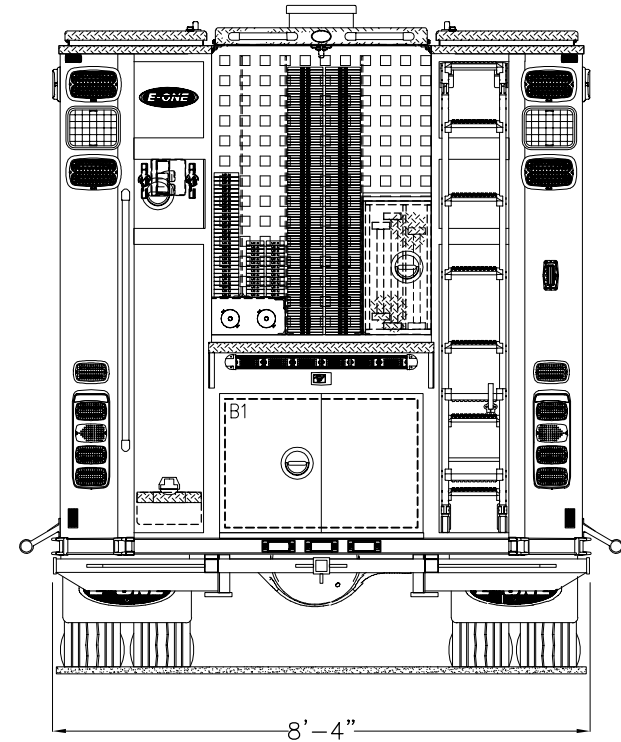
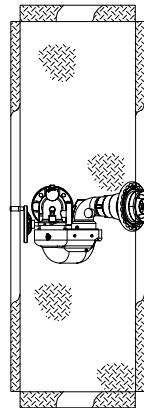
2000 GPM HALE QMAX PUMP	HOSE LOAD:	
650 GALLON WATER	250' OF 2.50"DJ	
30 GALLON INTEGRAL CLASS "B" FOAM	300' OF 1.75" DJ	
	1200' OF 4.00" LDH	

COMPT.	OPENING		INTERIOR DIMENSION				
L1/R1	46W	59H	48W	3H	12D	UPPER	
			48W	56H	26D	LOWER	
L2/R2	54W	25H	56W	3H	12D	UPPER	
			56W	22H	26D	LOWER	
L3/R3	54W	59H	56W	3H	12D	UPPER	
			56W	56H	26D	LOWER	
B1	38W	26H	38W	26H	26D		

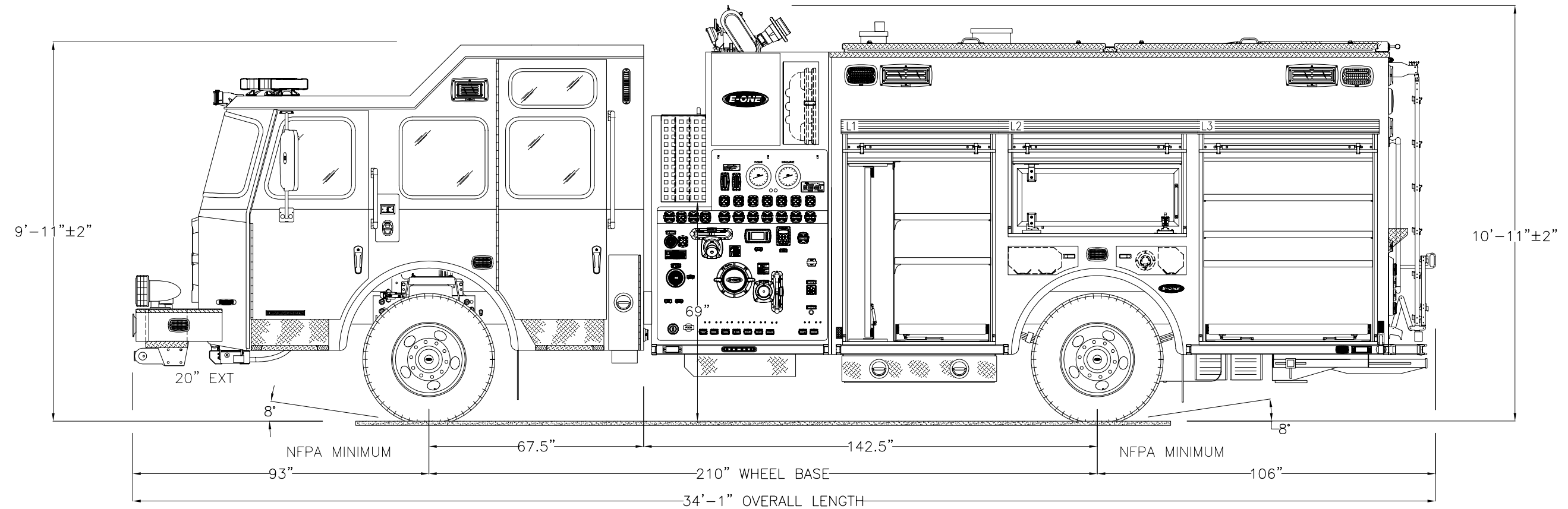
THIS DRAWING IS FOR REFERENCE PURPOSES. ALL DIMENSIONS ARE SUBJECT TO MINOR VARIATIONS DUE TO MANUFACTURING PROCESSES.

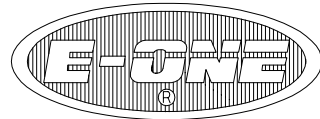
APPROVED FOR PRODUCTION

DESIGNER: KMARQUES DATE: 2019-DEC-13



HOSEBED HEIGHT:
 (FOR REFERENCE ONLY)
 TO TAILBOARD: 38"
 TO GROUND: 62"



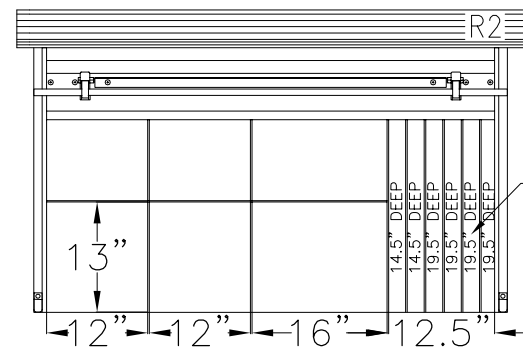
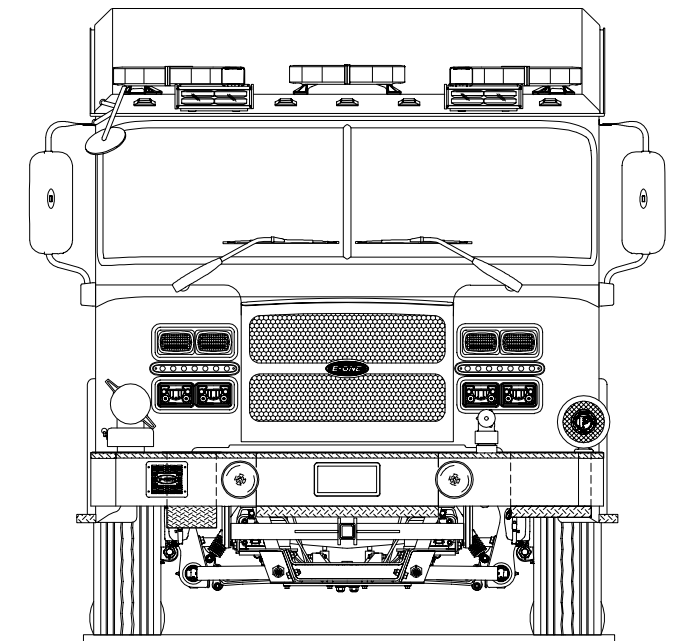


GLOUCESTER CITY FIRE DEPARTMENT
GLOUCESTER, NJ
SO.143694 / QUOTE 98933
CUSTOM 42 PUMPER
E-ONE TYPHOON 4X2 CHASSIS

THIS DRAWING IS FOR REFERENCE PURPOSES. ALL DIMENSIONS ARE
 SUBJECT TO MINOR VARIATIONS DUE TO MANUFACTURING PROCESSES.

APPROVED FOR PRODUCTION

DESIGNER: KMARQUES DATE: 2019-DEC-13



6 STORAGE AREAS
 EVENLY SPACED

