

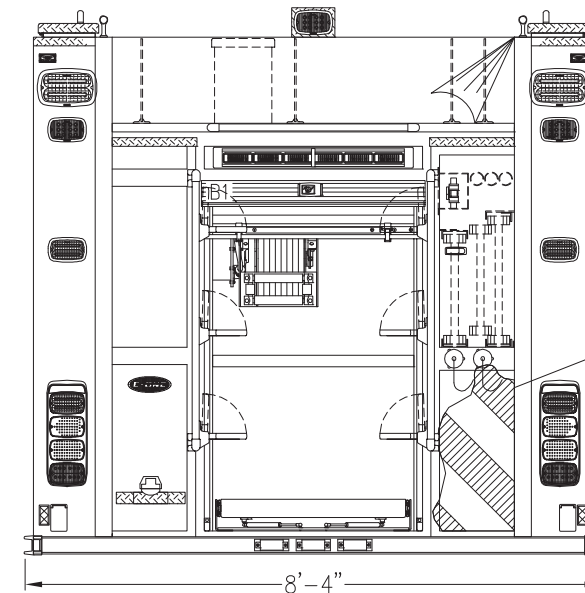
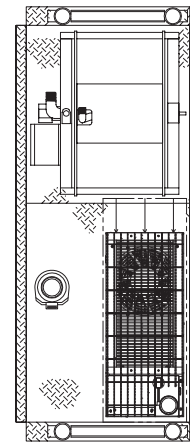
BRYN MAWR FIRE CO.
BRYN MAWR, PA
 SO# 138320 / Q57409
CUSTOM 36 RESCUE PUMPER
E-ONE TYPHOON X EXT D CAB 4X2 CHASSIS

| | | |
|--|------------------|--|
| 1500 GPM HALE QMAX-XS PUMP 780 GALLON WATER TANK SMARTPOWER 6KW HYDR L GENERATOR | HOSE LOAD: | |
| | 200' OF 2.50" DJ | |
| | 900' OF 3.00" DJ | |
| | 900' OF 3.00" DJ | |
| | 200' OF 1.75" DJ | |
| 200' OF 1.75" DJ | | |

| COMPT. | OPENING | INTERIOR DIMENSION | | |
|--------|---------|--------------------|-------------|--|
| L1 | 34W 59H | 36W 3H 12D | UPPER | |
| | | 36W 56H 26D | LOWER | |
| R1 | 34W 59H | 36W 25H 12D | UPPER | |
| | | 36W 30H 26D | LOWER | |
| L2 | 54W 25H | 56W 3H 12D | UPPER | |
| | | 56W 22H 26D | LOWER | |
| R2 | 54W 25H | 56W 25H 12D | | |
| L3 | 48W 59H | 36W 3H 12D | FRONT UPPER | |
| | | 36W 56H 26D | FRONT LOWER | |
| | | 14W 3H 10D | REAR UPPER | |
| | | 14W 56H 24D | REAR LOWER | |
| R3 | 48W 59H | 36W 25H 12D | FRONT UPPER | |
| | | 36W 30H 26D | FRONT LOWER | |
| | | 14W 25H 10D | REAR UPPER | |
| | | 14W 30H 24D | REAR LOWER | |
| B1 | 36W 51H | 38W 57H 26D | | |

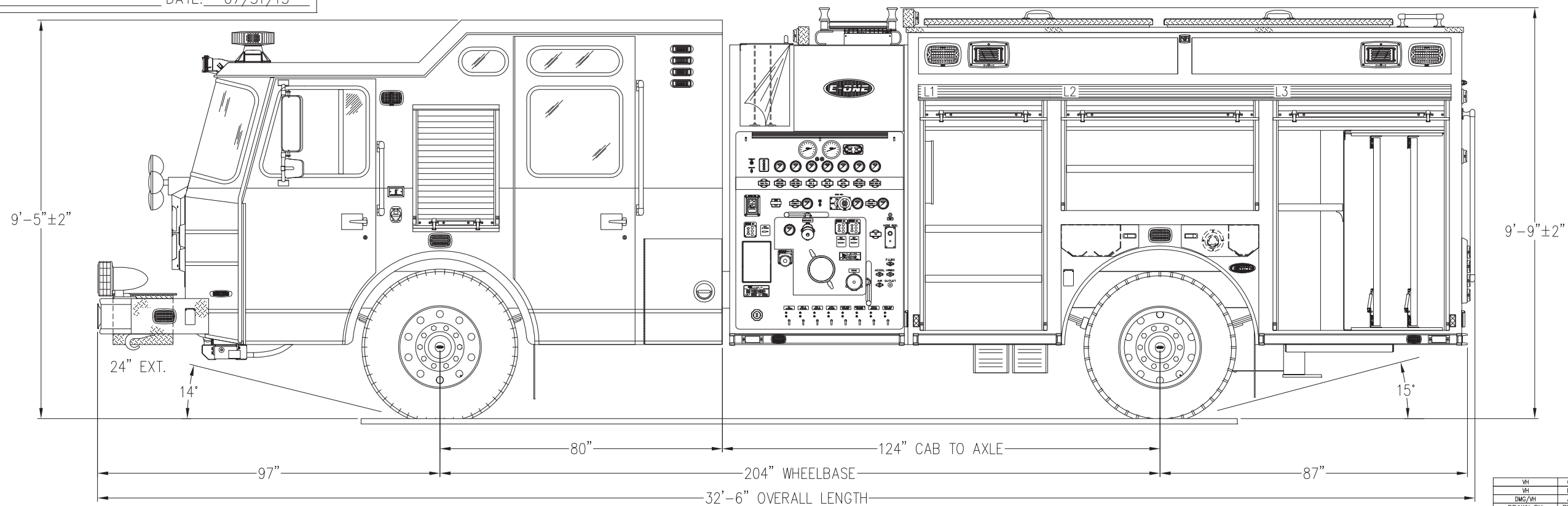
THIS DRAWING IS FOR REFERENCE PURPOSES. ALL DIMENSIONS ARE SUBJECT TO MINOR VARIATIONS DUE TO MANUFACTURING PROCESSES.

APPROVED FOR PRODUCTION
 DESIGNER: _____ DATE: 07/31/13

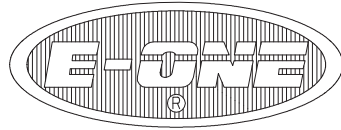


CHEVRON "A" STYLE
6" SCOTCHLITE
STRIPING

HOSEBED HEIGHT:
(FOR REFERENCE ONLY)
TO TAILBOARD: 72"
TO GROUND: 96"



| | | | | |
|----------|-----|--------------------|-------------|--------------|
| WH | C | PREBUILD RFP REV | 2013-JUL-31 | WH |
| WH | B | PREBUILD REVISION | 2013-JUL-18 | WH |
| DMG/WH | A | INITIAL RELEASE | 2013-JUL-12 | JD/WH |
| DRAWN BY | REV | DESCRIPTION | DATE | APPROVED |
| | | PROPOSAL REVISIONS | | SHEET 1 OF 2 |

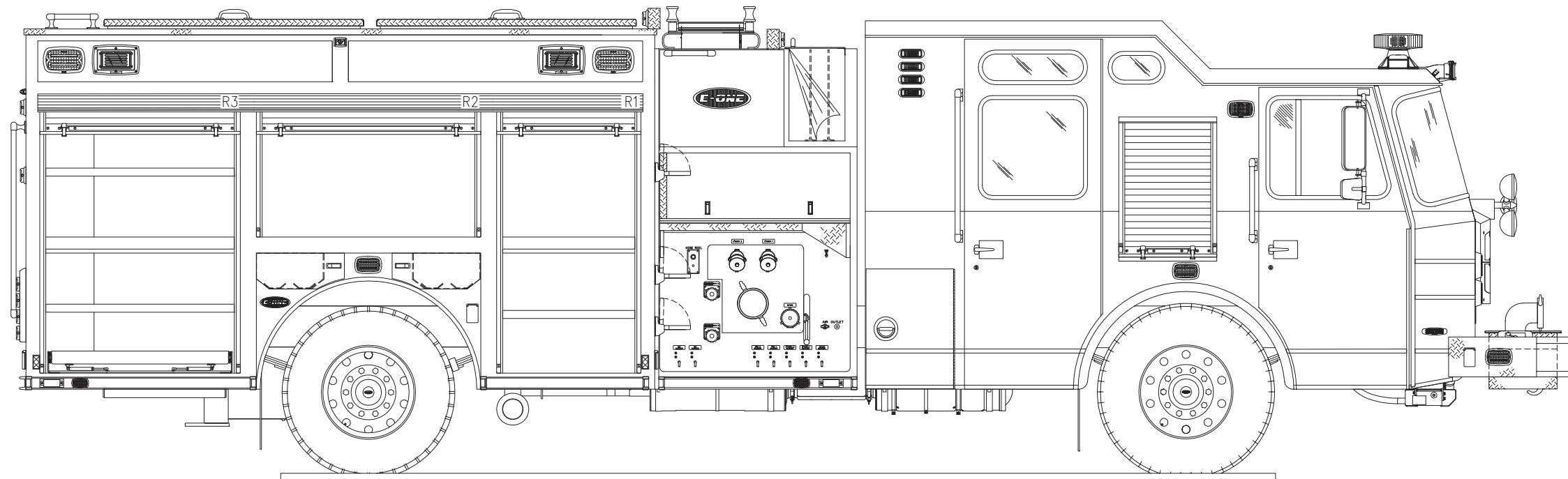
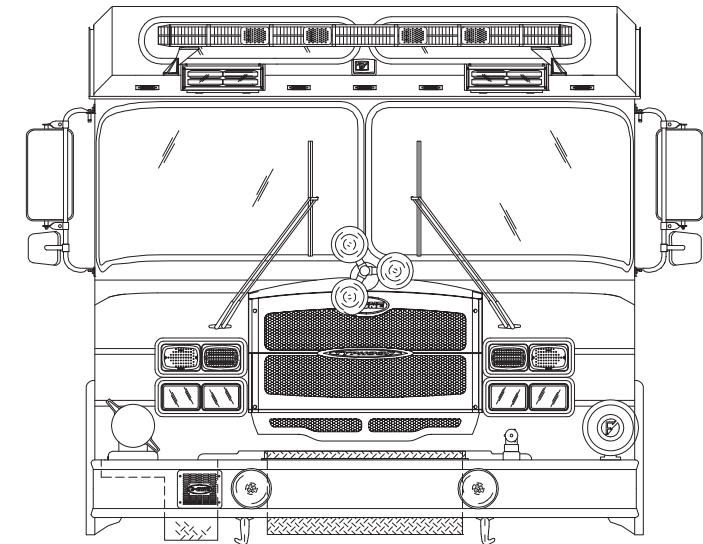


BRYN MAWR FIRE CO.
BRYN MAWR, PA
SO# 138320 / Q57409
CUSTOM 36 RESCUE PUMPER
E-ONE TYPHOON X EXT D CAB 4X2 CHASSIS

THIS DRAWING IS FOR REFERENCE PURPOSES. ALL DIMENSIONS ARE
 SUBJECT TO MINOR VARIATIONS DUE TO MANUFACTURING PROCESSES.

APPROVED FOR PRODUCTION

DESIGNER: _____ DATE: 07/31/13



| | | | | |
|----------|-----|--------------------|-------------|--------------|
| WH | C | PREBUILD RFP REV | 2013-JUL-31 | WH |
| WH | B | PREBUILD REVISION | 2013-JUL-18 | WH |
| DMG/WH | A | INITIAL RELEASE | 2013-JUL-12 | JD/WH |
| DRAWN BY | REV | DESCRIPTION | DATE | APPROVED |
| | | PROPOSAL REVISIONS | | SHEET 2 OF 2 |